

COMARCH



IoT Plant

Catalogue of services and solutions

The Comarch IoT Plant is an advanced manufacturing facility specialising in complex electronics manufacturing. It is located in the heart of the modern Comarch Campus in Kraków. At IoT Plant, we offer full support in the short-run manufacturing process of advanced components - from concept development to prototyping to device production and testing.

Our services include SMT surface mount and THT through-hole assembly, selective soldering and hand soldering. We also deal with electronics recovery and repair. Our tests, including Automatic Optical Inspection (AOI), Automated X-ray Inspection (AXI), ICT, FCT, ICSP Flying Probe and environmental testing, ensure the highest quality and reliability of components. Choose Comarch IoT Plant as a trusted partner at every stage of your project!

X-Ray

At the Comarch IoT Plant, we use advanced quality control technologies, including X-ray (X-Ray) systems. Automated X-ray testing (AXI) makes it possible to detect even the smallest defects inside components and soldered joints that are undetectable with traditional methods. This technology ensures the highest quality production, minimising the risk of failure and increasing the reliability of finished products.

Thanks to our control systems, equipment and components operate faultlessly and meet the highest quality standards. Our ability to detect and eliminate defects right from the production stage means that the number of defects is reduced to a minimum, so that customers do not have to worry about repair and return costs. The products that leave our production lines are also more resistant to damage, which translates into a longer lifespan for the equipment granted to facilities that want to improve the quality of services provided, especially in rural and less developed areas.



SMT assembly



Comarch IoT Plant specialises in SMT surface mount assembly crucial to modern electronics manufacturing. Our SMT lines are equipped with state-of-the-art machines that enable the precise assembly of components onto PCBs.

Working with Comarch IoT Plant also guarantees flexibility and a customised approach, which is particularly useful in the process of prototyping components. Regardless of the scale of production, we are able to adapt our processes to the specific requirements of each customer to achieve the most satisfactory result..

Thanks to advanced SMT technology, the assembly process is not only fast but also extremely accurate. Automatic optical inspection (AOI) allows verification of each plate, minimising the risk of defects and ensuring high quality, making the testing process a mere formality.

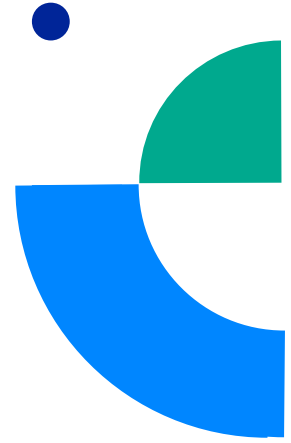
By using our SMT assembly services, you can rest assured that your projects are completed with the utmost precision and attention to detail. The modern technologies we use allow us to assemble even the most complex and components, opening up a wide range of new possibilities for our customers.



Martin Station

The Martin soldering station is used for the recovery of expensive and hard-to-reach SMD and BGA components. With the high-tech Martin Expert 10.6HV, we control the soldering process, ensuring the highest quality electrical and mechanical connections. The station enables the efficient removal of defects and the replacement of damaged components. This enables our customers to quickly restore full functionality to their equipment, avoiding prolonged downtime and associated costs. Precision soldering also reduces the risk of damage during repair, which is particularly important for delicate and valuable components.

In addition, our services allow compliance with high quality standards, which is crucial in industries such as medicine, for example, which require the utmost precision. By choosing Comarch IoT Plant, you are assured that your products will be repaired with the utmost care, which will translate into long-term reliability.



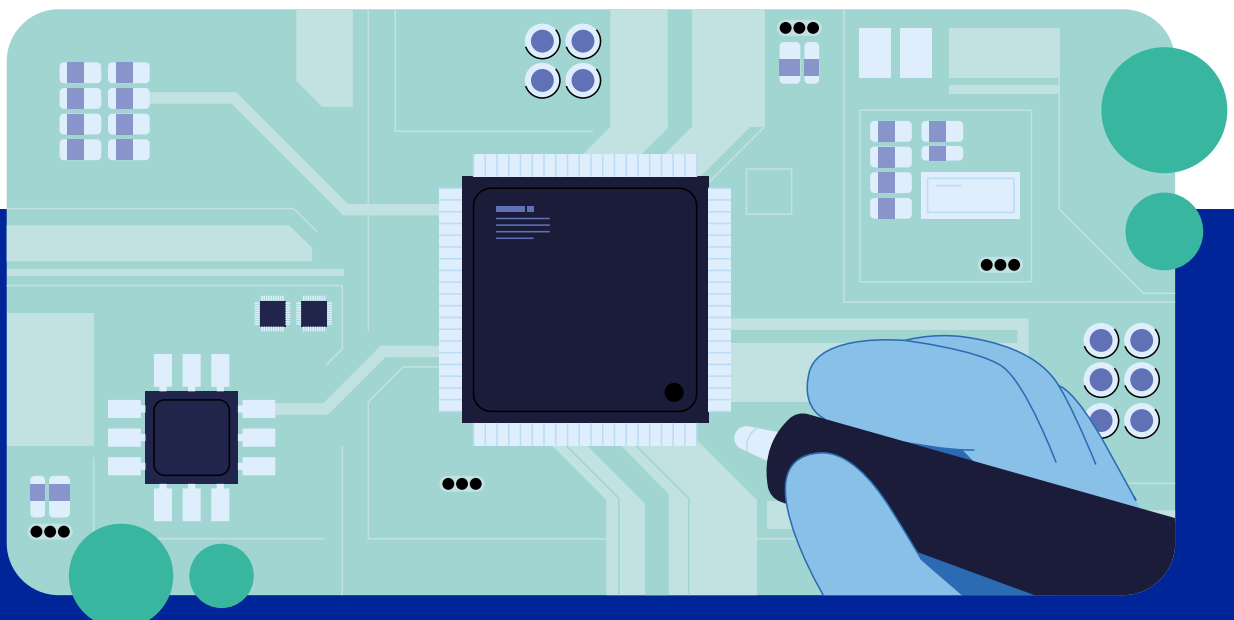
PCBs

PCBs are a key component in the electronics manufacturing process. Our approach to their design, production and quality control ensures reliability and the highest quality for our customers. To ensure that each circuit meets the most stringent standards, we only work with verified suppliers.

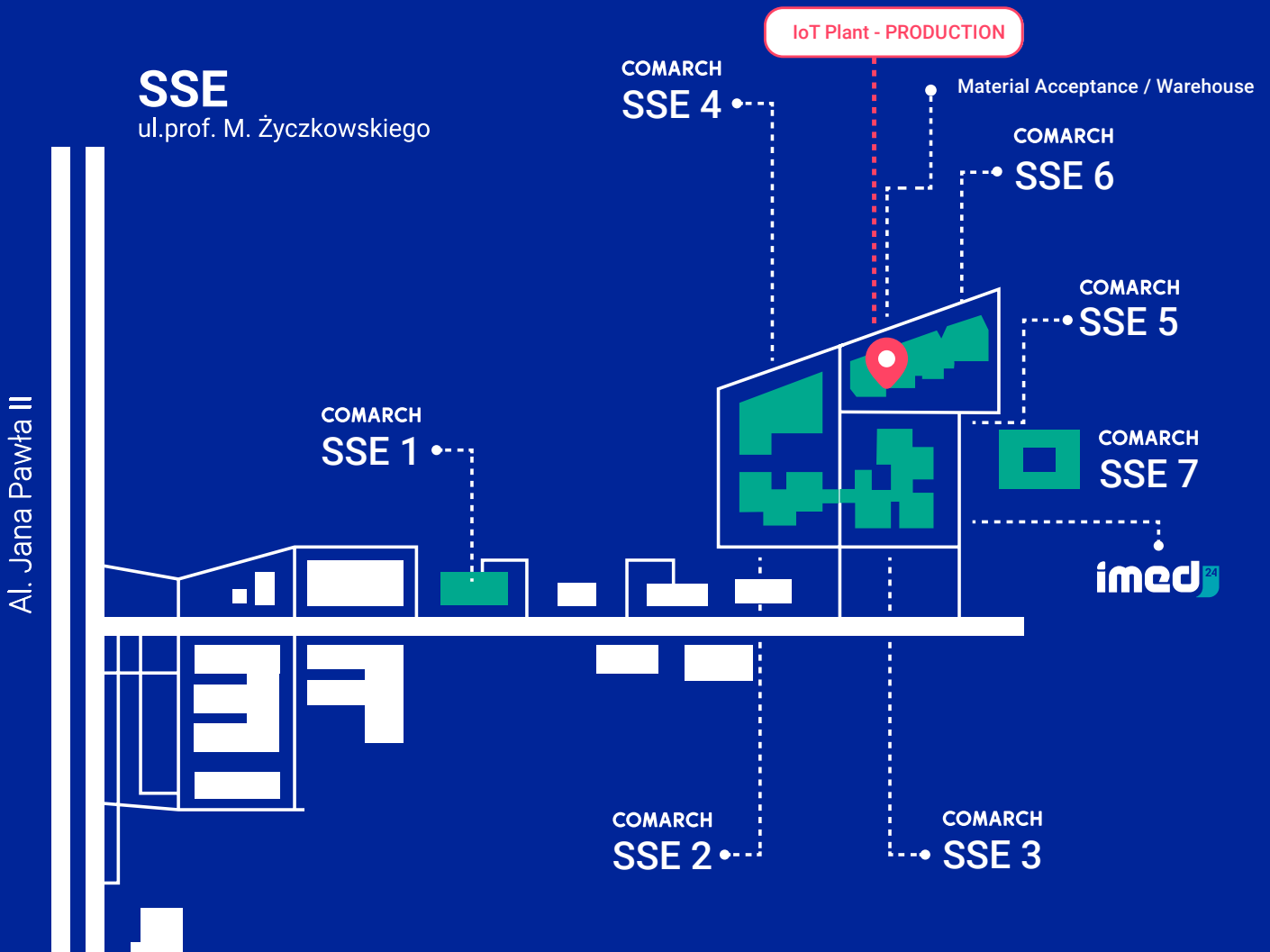
Attention to detail starts at the detailed PCB design stage, where every aspect is carefully considered. We select only the highest quality materials, tailored to the specific requirements of each project. This makes our PCBs not only durable, but also makes them meet the specific requirements of various industries such as medicine, the military or aerospace sectors.

Our many years of experience in these sectors enables us to meet even the most demanding standards.

We do not stop at production - each circuit goes through rigorous functional testing to ensure it meets all design requirements. Our advanced technologies, such as automatic optical inspection (AOI) and X-ray testing (AXI), enable the detection of even the smallest defects. This ensures that our PCBs are free of defects and ready to work reliably in the most demanding equipment.



Comarch IoT Plant - trust the experienced experts



Comarch IoT Plant belongs to the global company Comarch, whose head office is located in the very centre of Krakow. Since 2017, prototyping and manufacturing services or electronic devices have been provided at the Comarch IoT Plant.

For more information on working with Comarch IoT Plant, visit our website. Trust our experts and join the ranks of satisfied customers.

See us here!



<https://www.comarch.com/iot-plant/>

ABOUT US

Comarch is a leading provider of business IT solutions in Central Europe, our business relationships are based on maximising the profitability of the client company while optimising business and operational processes.

We build on the extensive knowledge that the Comarch Group has gained during its 30 years of providing comprehensive IT solutions. The overriding aim of the Company is to provide customers with the most reliable and secure solutions, including advanced software and innovative hardware infrastructure, supported by professional services.

Copyright © Comarch 2024. All rights reserved.

Infolinia: +48 12 621 51 92