



# COMARCH ASSET MANAGEMENT

## The reason why

The basic aim is no longer just to streamline current operations, but to possess a system that is able to provide detailed information concerning the risk and effectiveness of investments. In order to meet capital market expectations, Comarch has developed the **Comarch Asset Management** system, which is responsible for the comprehensive servicing of financial institutions engaged in running investment portfolios and asset management.

## IT solution for Portfolio Management

Comarch Asset Management is a comprehensive tool that automates the process of asset management, implementation of investment decisions (incl. simulations, generators), registration of orders and transaction settlements, pre- and post-trade compliance, investment limit queries and investigations, portfolio modeling and rebalancing, fee calculation, providing current information on assets under management, cash-flow forecast and integration with market data providers and counterparties. Due to the advanced functionality of transaction recording and performance management, the system covers MIFID requirements and reporting in accordance with GIPS™ and AIMR-PPS™ recommendations.

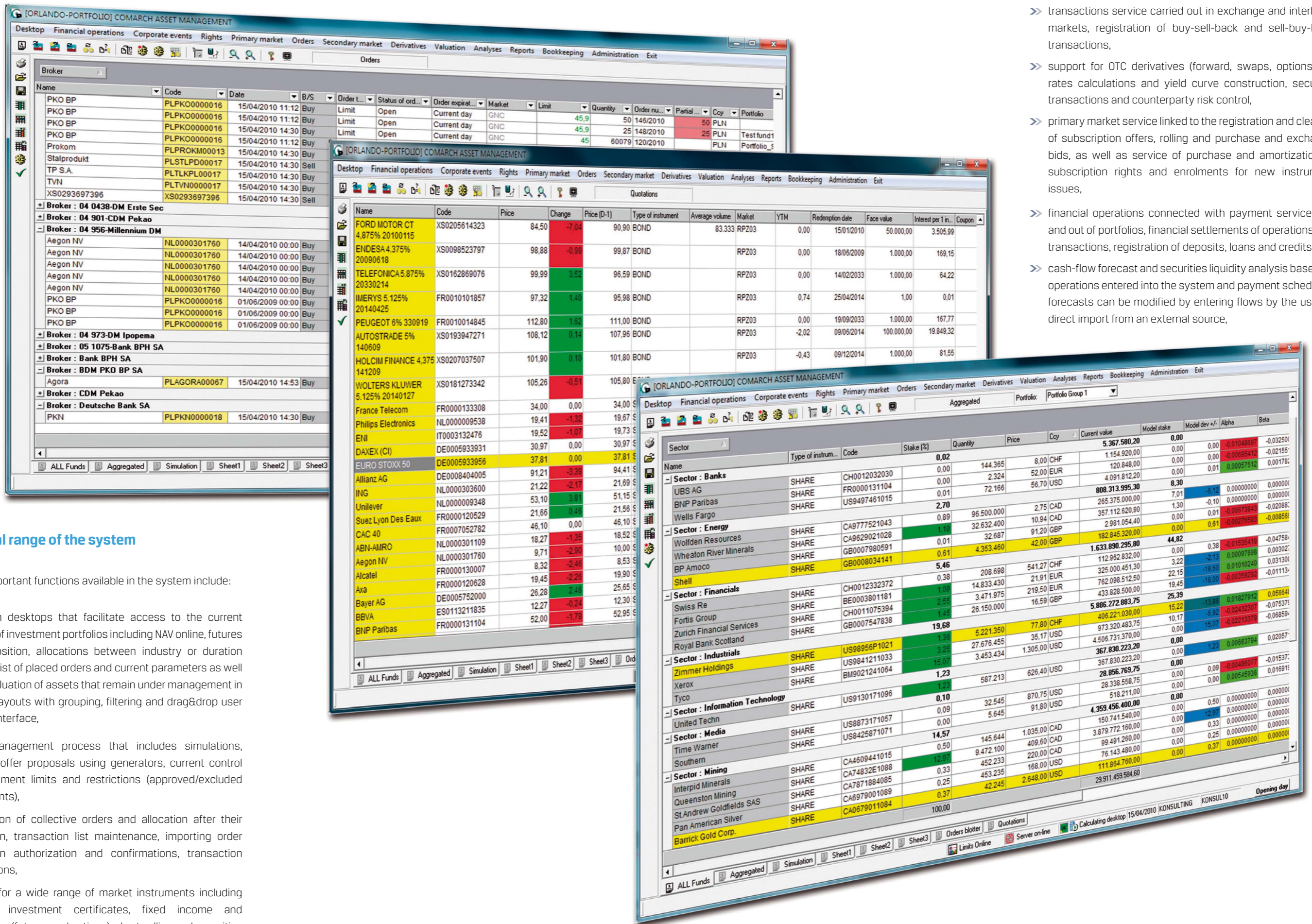
## The System target group

Comarch Asset Management is a practical solution addressed to all types of asset management companies, including:

- » Investment Funds
- » Insurance Companies
- » Pension Funds
- » Institutional Asset Managers
- » Bank Depositors
- » Private Banks
- » Wealth Managers
- » other institutions involved in investment portfolio management.

*Comarch Asset Management provides comprehensive support in all important business areas of an investment management company*





### Functional range of the system

The most important functions available in the system include:

- » operation desktops that facilitate access to the current content of investment portfolios including NAV online, futures decomposition, allocations between industry or duration sectors, list of placed orders and current parameters as well as the valuation of assets that remain under management in defined layouts with grouping, filtering and drag&drop user friendly interface,
- » order management process that includes simulations, creating offer proposals using generators, current control of investment limits and restrictions (approved/excluded instruments),
- » registration of collective orders and allocation after their realization, transaction list maintenance, importing order realization authorization and confirmations, transaction verifications,
- » support for a wide range of market instruments including equities, investment certificates, fixed income and derivatives (futures and options); short selling and securities lending including a collateral monitoring functionality,

- » transactions service carried out in exchange and interbank markets, registration of buy-sell-back and sell-buy-back transactions,
- » support for OTC derivatives (forward, swaps, options), FX rates calculations and yield curve construction, securing transactions and counterparty risk control,
- » primary market service linked to the registration and clearing of subscription offers, rolling and purchase and exchange bids, as well as service of purchase and amortization of subscription rights and enrolments for new instrument issues,
- » financial operations connected with payment service into and out of portfolios, financial settlements of operations and transactions, registration of deposits, loans and credits,
- » cash-flow forecast and securities liquidity analysis based on operations entered into the system and payment schedules, forecasts can be modified by entering flows by the user or direct import from an external source,

- » operations on papers and rights from papers that enable the realization of such market events as splits, assimilations, conversions, payment of interest and redemptions,
- » instrument and portfolio valuation based on market and accounting value, taking into account various methods of instrument spending (e.g. FIFO, HIFO, LIFO), management fee and success fee calculation, including other transaction and administrative fees for the depositary and intermediaries,
- » portfolio evaluation with regard to net and gross performance consistent with revised international Global Investment Performance Standards (GIPS™) and calculations of basic instrument parameter and portfolio risk (duration, PVBP, tracking error, information ratio),
- » performance attribution calculations for equities and fixed income – day-by-day and multiple period models including allocation, selection, interaction and duration effects,
- » service portfolio bookkeeping (also in different currencies for portfolios) based on a dedicated plan of accounts and bookkeeping schemes with the possibility of manual entries, access to operation log, history of account statuses and registered dispositions,
- » reporting connected with presentation of portfolio status and structure, history of orders and transactions, valuation and analysis of portfolio performance and risk with possibility to export data to MS Excel and PDF files,
- » registration of catalogue data connected with record of customers and investment portfolios, parameters of agreements and tables of fees and commissions, defining financial instruments and storing market data, creating investment strategies, model portfolios and benchmarks,
- » administration of users and access profiles to functions and investment portfolios, parameterization of the system calendar and automatic functions,
- » warnings module, which allows the chosen users to be informed about important events or significant departures from defined rules,
- » compliance with MiFID regulations and market conformity features allowing control of the investment decision process,
- » integration with market data providers, information systems (catalogues) as well as data transfer with brokers, banks, transfer agents and other systems at customer site i.e. data warehouse.

### Order Management Process Support



*Full order process and step-by-step monitoring provide expected automation and mitigate operational risks*

#### Comarch SA

Al. Jana Pawła II 39 a  
31-864 Kraków  
Poland

**tel.:** +48 12 64 61 000

**fax:** +48 12 64 61 100

**e-mail:** [finance@comarch.com](mailto:finance@comarch.com)

#### [www.assetmanagement.comarch.com](http://www.assetmanagement.comarch.com)

[www.comarch.com](http://www.comarch.com) [www.comarch.pl](http://www.comarch.pl) [www.comarch.de](http://www.comarch.de) [www.comarch.ru](http://www.comarch.ru)

ComArch Spółka Akcyjna with its registered seat in Kraków at Aleja Jana Pawła II 39A, entered in the National Court Register kept by the District Court for Kraków-Śródmieście in Kraków, the 11th Commercial Division of the National Court Register under no. KRS 000057567. The share capital amounts to 7,960,596.00 zł. The share capital was fully paid, NIP 677 - 00 - 65 - 406  
Copyright © Comarch 2009. All Rights Reserved.