

Maximizing the availability of your network

Comarch Fault Management

Introduction

The ultimate requirement of today's networks is to provide continuous availability for the performance of critical tasks required by businesses. However, network equipment has become increasingly complex, creating more eventualities for failure. Efficiently handling failures is essential for improving the overall system dependability.

Based on cutting-edge technology, Comarch Fault Management is a complete solution to ongoing fault issues inside operators' networks. This indispensable tool monitors all existing elements of the network and receives, displays and efficiently tracks alarms, allowing users to manage potentially debilitating network problems quickly and effectively. Its flexible and extensive range of features assist operators in detecting and solving issues that are at the root of network faults.

Business and Operational Benefits

In today's highly competitive telecommunication market the presence of an advanced fault management solution is an indispensable requirement for the success of operators' businesses. Basic functionalities of Comarch Fault Management include:

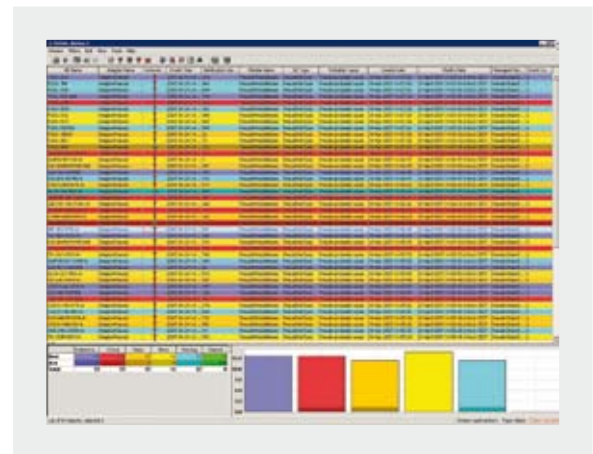
- Fast and reliable identification of the root-cause of a network fault
- Full automation of fault management tasks
- Support for various network domains
- Unified alarm management across different network elements
- Easy integration with existing systems.

Thanks to its wide scope of functionalities, Comarch Fault Management is a sure step towards better management of network failures, improved service reliability and a reduction in OPEX. It guarantees an improvement of your network reliability with centralized and unified control across all network domains.

Functionality

Comarch Fault Management enables users to fully configure the way alarms are processed which speeds up identification of failures and allows users to allocate tasks according to internal company processes.

All alarms are collected, processed and displayed in real-time. Alarm information is automatically updated as soon as new alarms arrive, providing users with a dynamically changing view that accurately reflects the actual state of the network. Detailed information on alarms within a selected location can be immediately displayed by opening the alarm manager from the context menu. Appropriate filters are applied automatically in order to allow fast, context-based navigation which strongly reduces alarm processing time.



Alarms monitoring

Comarch Fault Management provides a sophisticated alarm visualization interface. Apart from visualizing the list of alarms it is possible to use maps in order to visualize the status of the network infrastructure. The system supplies geographical, logical and hierarchical visualization as well as a floor plan view of the network and its faulty elements through imported AutoCAD® DXF files. This detailed view enables users to obtain the most complete information about the exact location of faulty elements that can be further passed onto other members of personnel in order to speed up repairs.

Comarch Fault Management uses Reasoning Engine – Comarch’s proprietary correlation engine - in order to automate the processing of alarm events. This rule-based event management system is equipped with internal rule definition language which is seamlessly configurable using the Comarch OSS Suite console user interface. The idea behind the use of the correlation engine is to speed up event management in order to quickly identify the root of existing alarms. By defining reasoning scenarios users can transfer the corporate infrastructure know-how to the Comarch Fault Management system in order to obtain real and meaningful alarms pointing out the real cause of the problem.

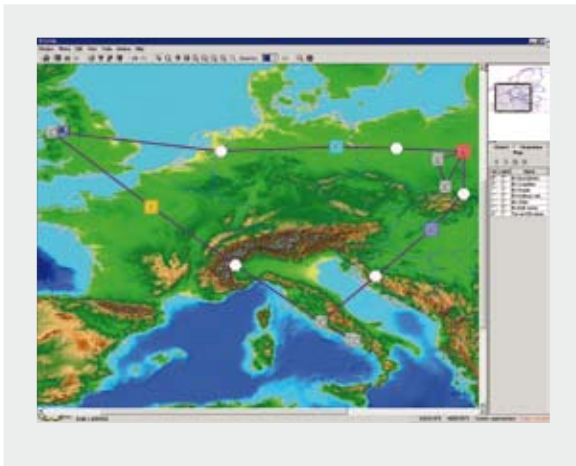
Comarch Fault Management provides users with a set of standard functions to be used during the definition of scenarios in order to retrieve additional data during execution of correlation rules:

- Notifications (SMS, email, etc.),
- Event generation,
- Counters,
- Database connections/queries (JDBC),
- FTP/Telnet/SSH operations,
- Remote command execution.

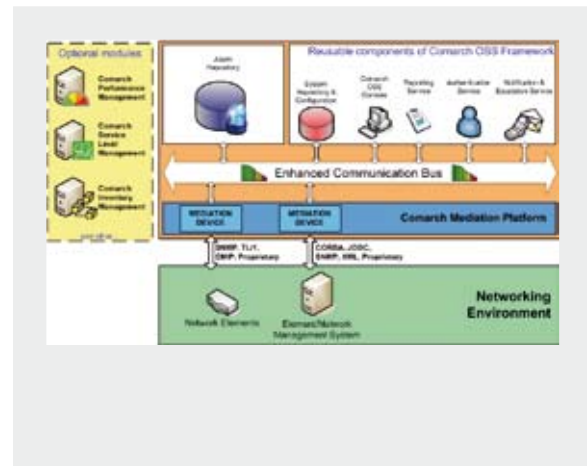
Open Architecture

Comarch Fault Management is an exceptional system in terms of openness. Integration with Comarch OSS Mediation, which assures communication with all network devices and events, results in a flexible and powerful solution. Operators can also greatly benefit from integrating other components of Comarch OSS Suite including:

- Comarch Inventory Management,
- Comarch Network Performance Management,
- Comarch Service Level Management.



Geographical view



Comarch Fault Management architecture

Comarch Headquarters
Al. Jana Pawła II 39 a
31-864 Krakow
Poland
phone: +48 12 64 61 000
fax: +48 12 64 61 100
e-mail: info@comarch.com

www.telecommunications.comarch.com

www.comarch.com www.comarch.pl www.comarch.de www.comarch.ru

ComArch Spółka Akcyjna with its registered seat in Kraków at Aleja Jana Pawła II 39A, entered in the National Court Register kept by the District Court for Kraków-Śródmieście in Kraków, the 11th Commercial Division of the National Court Register under no. KRS 000057567. The share capital amounts to 7,960,596.00 zł. The share capital was fully paid, NIP 677 - 00 - 65 - 406
Copyright © Comarch 2007. All Rights Reserved.

EN-2008.04