


COMARCH

PRODUCT LEAFLET

FAULT MANAGEMENT



A person's hands are shown holding a smartphone, with a laptop keyboard visible in the background. The entire image is overlaid with a semi-transparent blue filter. The text is positioned in the upper half of the image.

The ultimate requirement of today's networks is to provide continuous availability for the performance of critical tasks required by businesses. However, network equipment, physical and virtualized, has become increasingly complex, leaving more room for failure. Efficiently handling failures is essential for improving the overall system dependability.

Based on modern, advanced technology, **Comarch Fault Management (FM) is a complete product for ongoing fault issues within operators' hybrid physical-virtual networks. This network fault monitoring tool controls all existing elements of the network and receives, displays and tracks alarms efficiently, allowing users to manage potentially debilitating network problems quickly and effectively.** Its flexible and extensive range of features provides sophisticated automation and assists operators in detecting and solving issues that are at the root of network faults.

The Comarch Fault Management system is closely integrated with other products from the Comarch Integrated Assurance family, and supports unified event processing paths via a cutting-edge correlation engine and “single pane of glass” approach, which gives the operator rapid access to all relevant information (correlated alarms, related trouble tickets, outages, details of resources and locations, alarms from the same resource, alarms from the same location, historical alarms, know-how entries, etc.) in one place. Comarch Fault Management software can be extended with the Topological Correlations Module and Machine Learning Module to increase the alarm correlation rate and prediction capabilities.

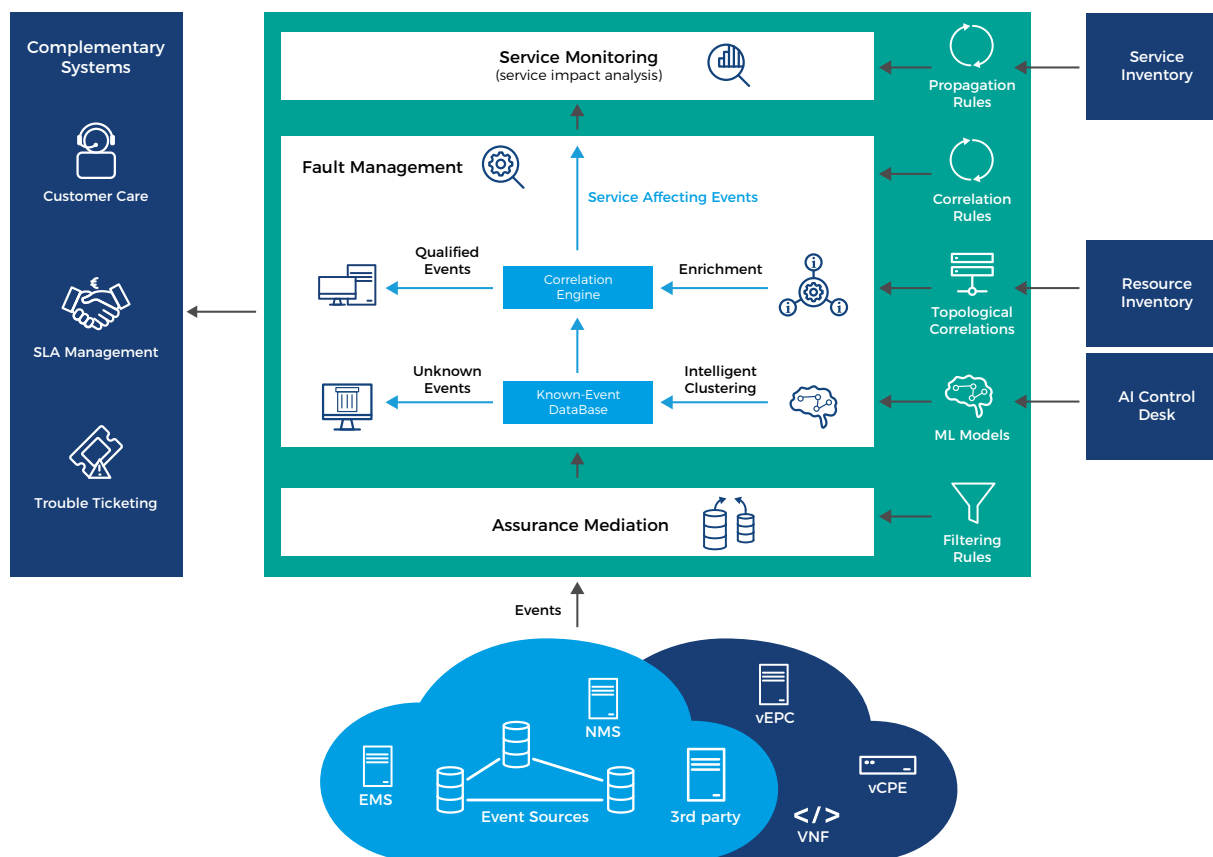


Figure 1. Comarch Fault Management architecture

BENEFITS OF COMARCH FAULT MANAGEMENT PRODUCT:

INTRODUCE INTELLIGENT EVENT PROCESSING

Manage services implemented on heterogeneous multi-vendor, multi-domain networks and delivery platforms serviced by partners.

BUILD AN UMBRELLA SYSTEM TO SUPPORT EFFICIENT ORCHESTRATION

Protect customers from experiencing service quality deterioration, using analytics and prediction features.

SUPPORT YOUR SDN/NFV INFRASTRUCTURE

A comprehensive fault management system is the key to efficient orchestration of the virtualized environment. The Comarch Fault Management system supports modern NFV interfaces so they get the current status of the network and steer other processes realized by E2E Orchestrator.

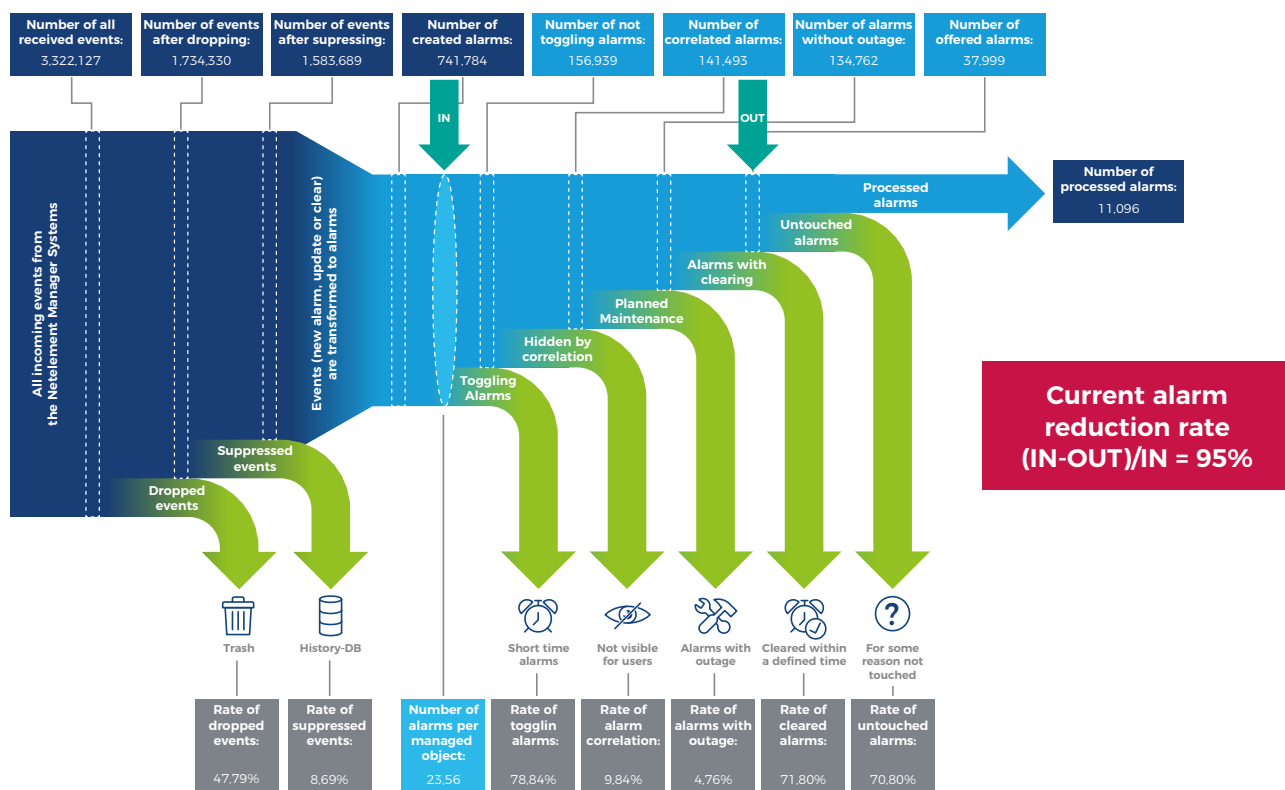


Figure 2. Alarm reduction rate achieved with IA&A Fault Management functionalities

ABOUT COMARCH

Since 1993, Comarch's specialist telecommunications business unit has worked with some of the biggest telecoms companies in the world to transform their business operations. Our industry-recognized telco OSS and BSS products help telecoms companies streamline their business processes and simplify their systems to increase business efficiency and revenue, as well as to improve the customer experience and help telcos bring innovative services to market. Comarch's customers in telecommunications include Telefónica, Deutsche Telekom, Vodafone, KPN and Orange.

Copyright © Comarch 2020. All Rights Reserved

telco-enquiries@comarch.com

telecoms.comarch.com

COMARCH