

COMARCH

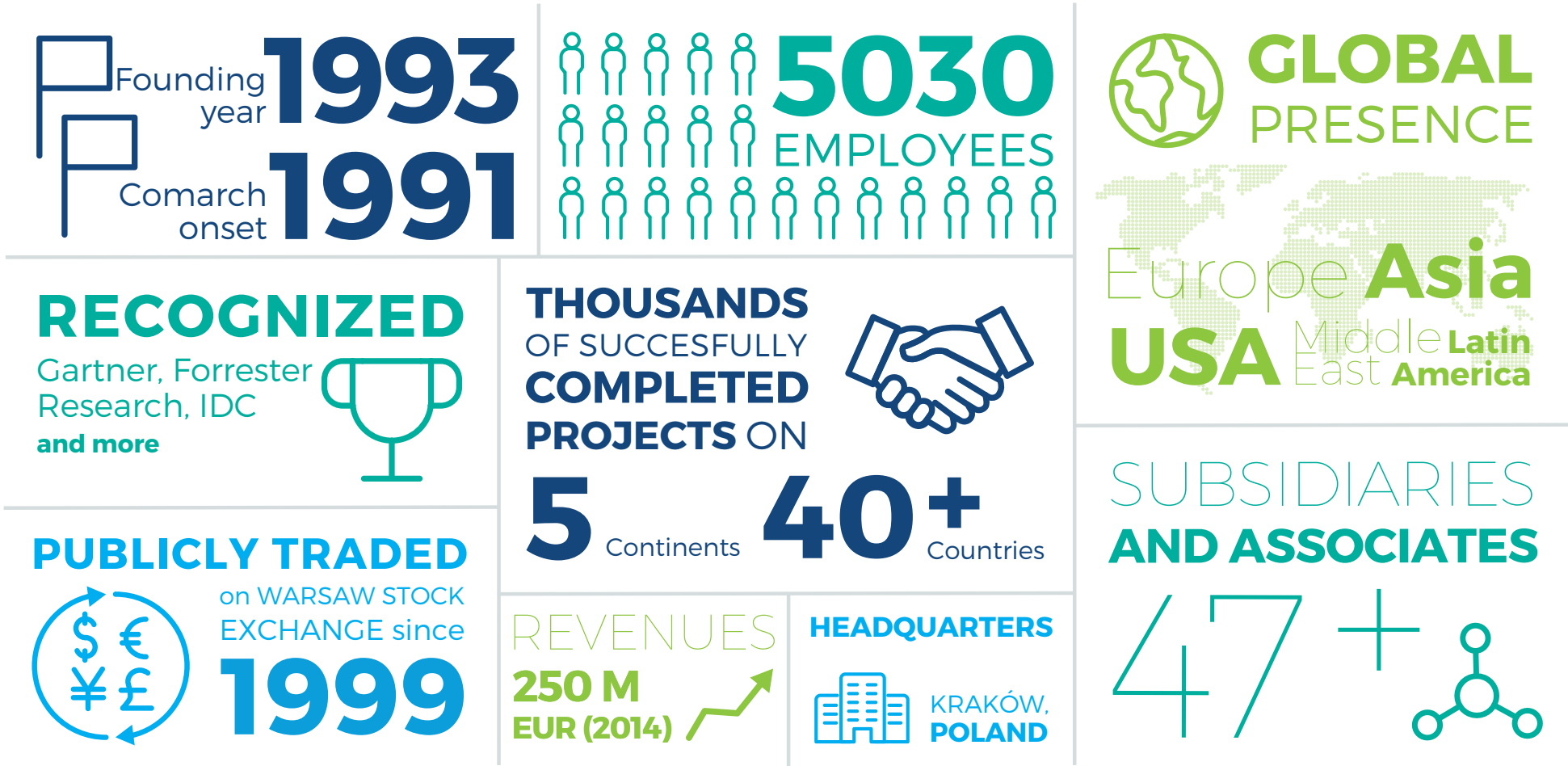
**COMPANY
PROFILE**

CHAPTER I

COMARCH AT A GLANCE



COMARCH - INTEGRATOR AND SOFTWARE HOUSE OF INNOVATIVE IT SYSTEMS



COMARCH - WORLDWIDE CUSTOMERS, PROJECTS, COMPANY, DATA CENTER

47

SUBSIDIARIES
AND ASSOCIATES

71

OFFICES

50

CITIES

24

COUNTRIES

5

CONTINENTS

EUROPE

- 1 Poland
Białystok, Bielsko-Biała, Gdańsk, Gliwice,
Katowice, Kielce, **Krakow HQ**, Lublin, Łódź,
Poznań, Rzeszów, Tarnów, **Warszawa**, Wrocław
- 2 Albania
Tirana
- 3 Austria
Innsbruck, Vienna
- 4 Belgium
Brussels
- 5 Finland
Espoo
- 6 France
Grenoble, Montbonnot Saint Martin, **Lille**,
Lezennes
- 7 Germany
Berlin, Bremen, **Dresden**, Düsseldorf,
Frankfurt, Hamburg, Hannover, Munich,
Münster
- 8 Italy
Milan
- 9 Luxembourg
Strassen
- 10 Russia
Moscow
- 11 Spain
Madrid
- 12 Sweden
Stockholm
- 13 Switzerland
Arbon, Lucerne
- 14 Turkey
Istanbul
- 15 UK
London
- 16 Ukraine
Kiev, Lviv

ASIA

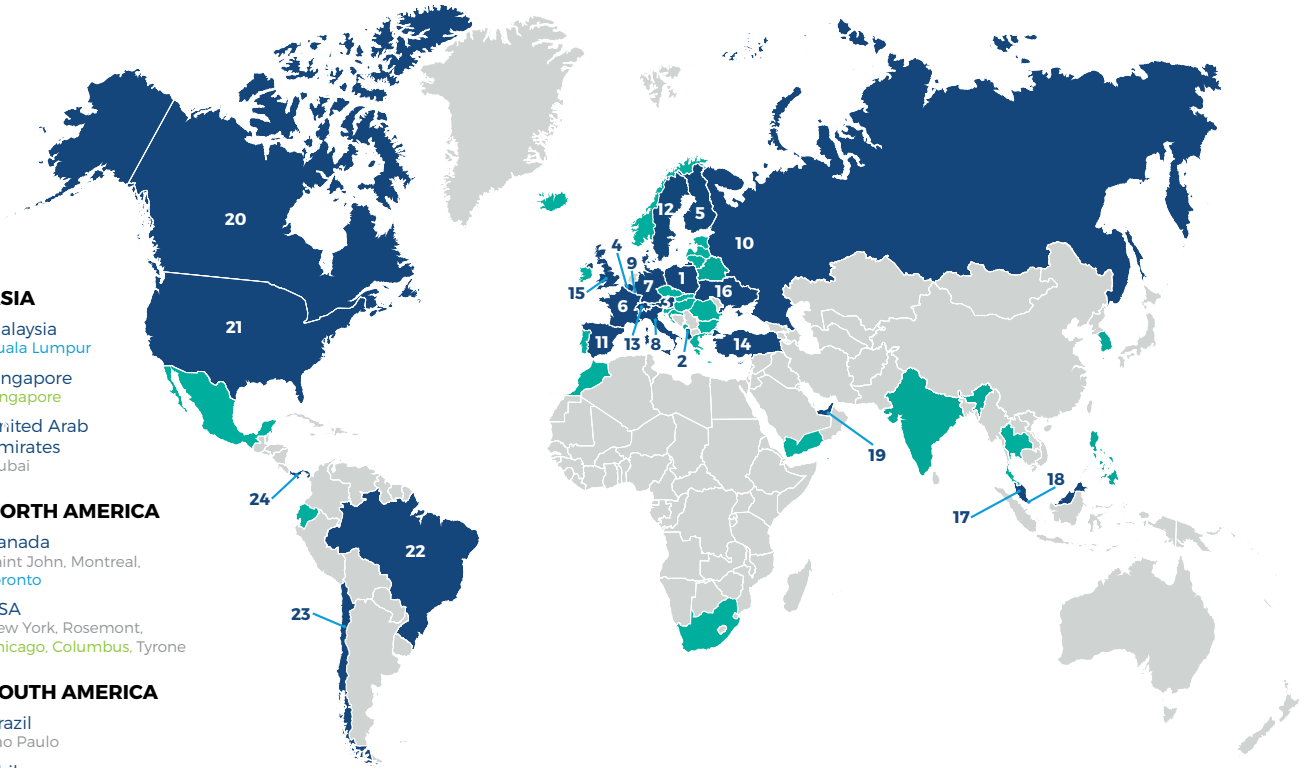
- 17 Malaysia
Kuala Lumpur
- 18 Singapore
Singapore
- 19 United Arab
Emirates
Dubai

NORTH AMERICA

- 20 Canada
Saint John, Montreal,
Toronto
- 21 USA
New York, Rosemont,
Chicago, **Columbus**, Tyrone

SOUTH AMERICA

- 22 Brazil
Sao Paulo
- 23 Chile
Santiago
- 24 Panama
Panamá City



AREAS OF RESPONSIBILITY AND ORGANIZATIONAL STRUCTURE



prof. Janusz Filipiak

Founder and CEO of Comarch SA
Strategy, HR, Marketing



Konrad Tarański

CFO,
Finance, Administration,
Interior IT Systems

DIVISIONS



Zbigniew Rymarczyk

Vice-President of
the Management Board,
Director of
**ERP
DIVISIONS**



Paweł Prokop

Vice-President of
the Management Board,
Director of
**PUBLIC SECTOR
DIVISION**



Marcin Warwas

Vice-President of
the Management Board,
Director of
**SERVICES
DIVISION**



Marcin Dąbrowski

Vice-President of
the Management Board,
Director of
**TELECOMMUNICATIONS
DIVISION**



Andrzej Przewięźlikowski

Vice-President of
the Management Board,
Director of
**FINANCIAL SERVICES
DIVISION**



Piotr Piątosza

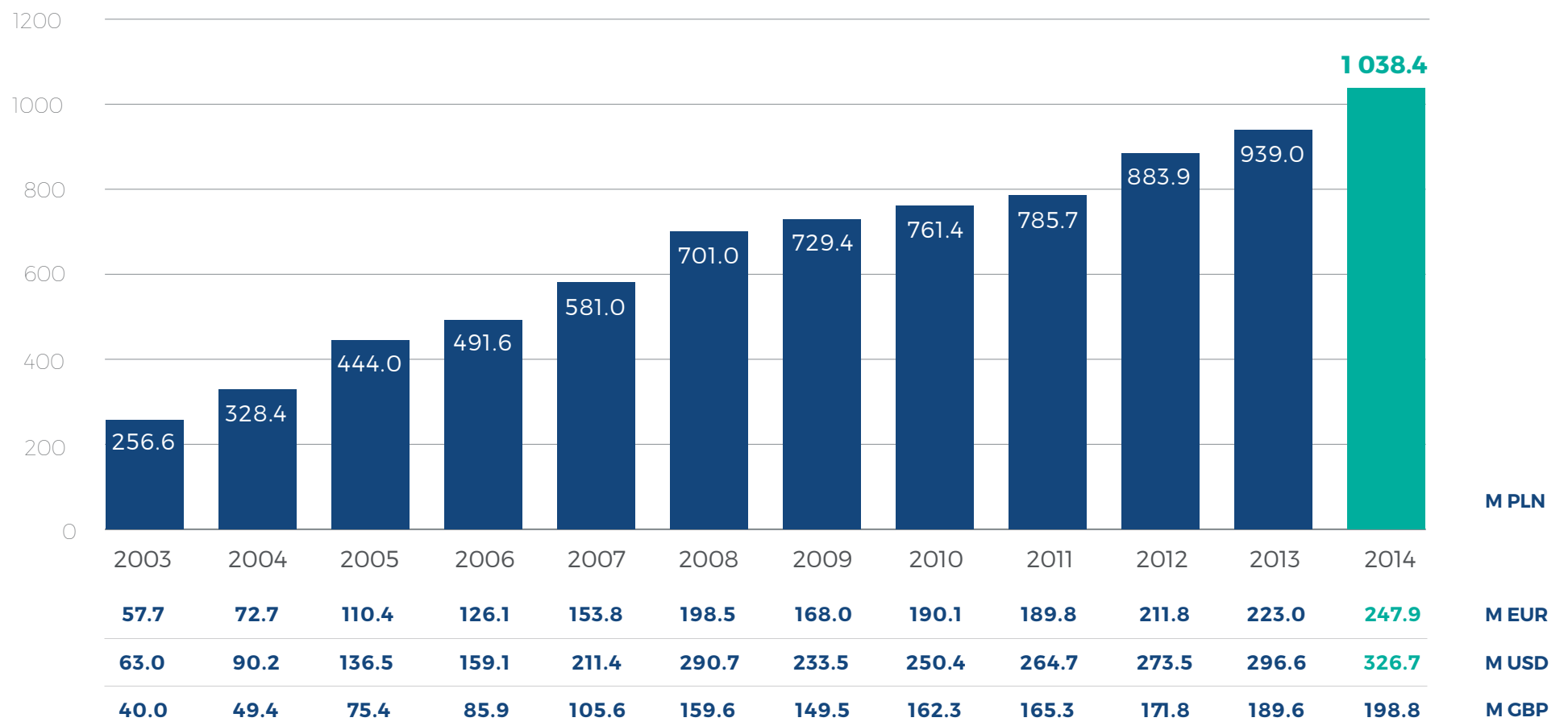
Director of
**COMARCH HEALTHCARE
DIVISION**



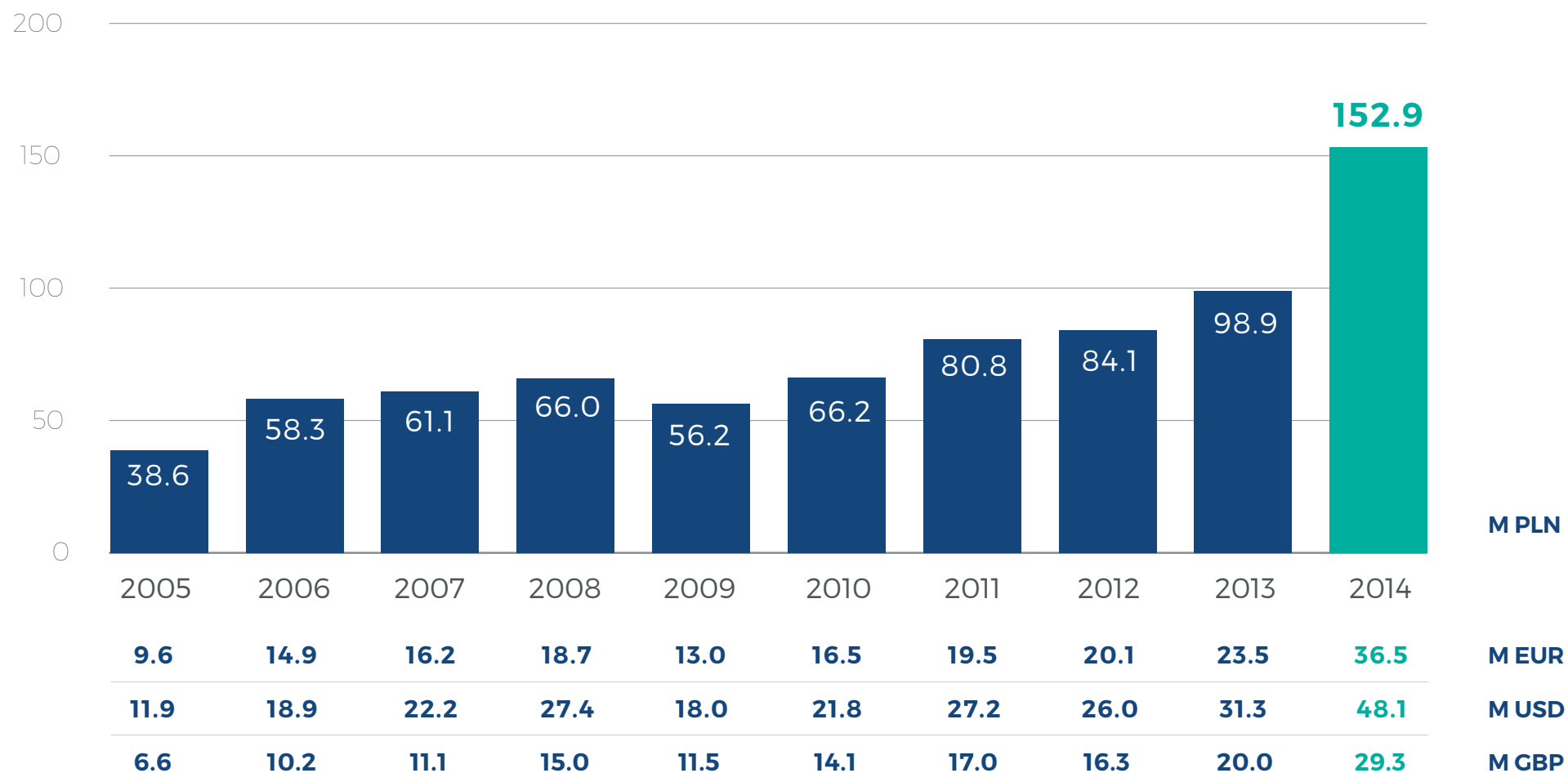
Mariusz Lasek

Director of
**COMARCH
TECHNOLOGIES
DIVISION**

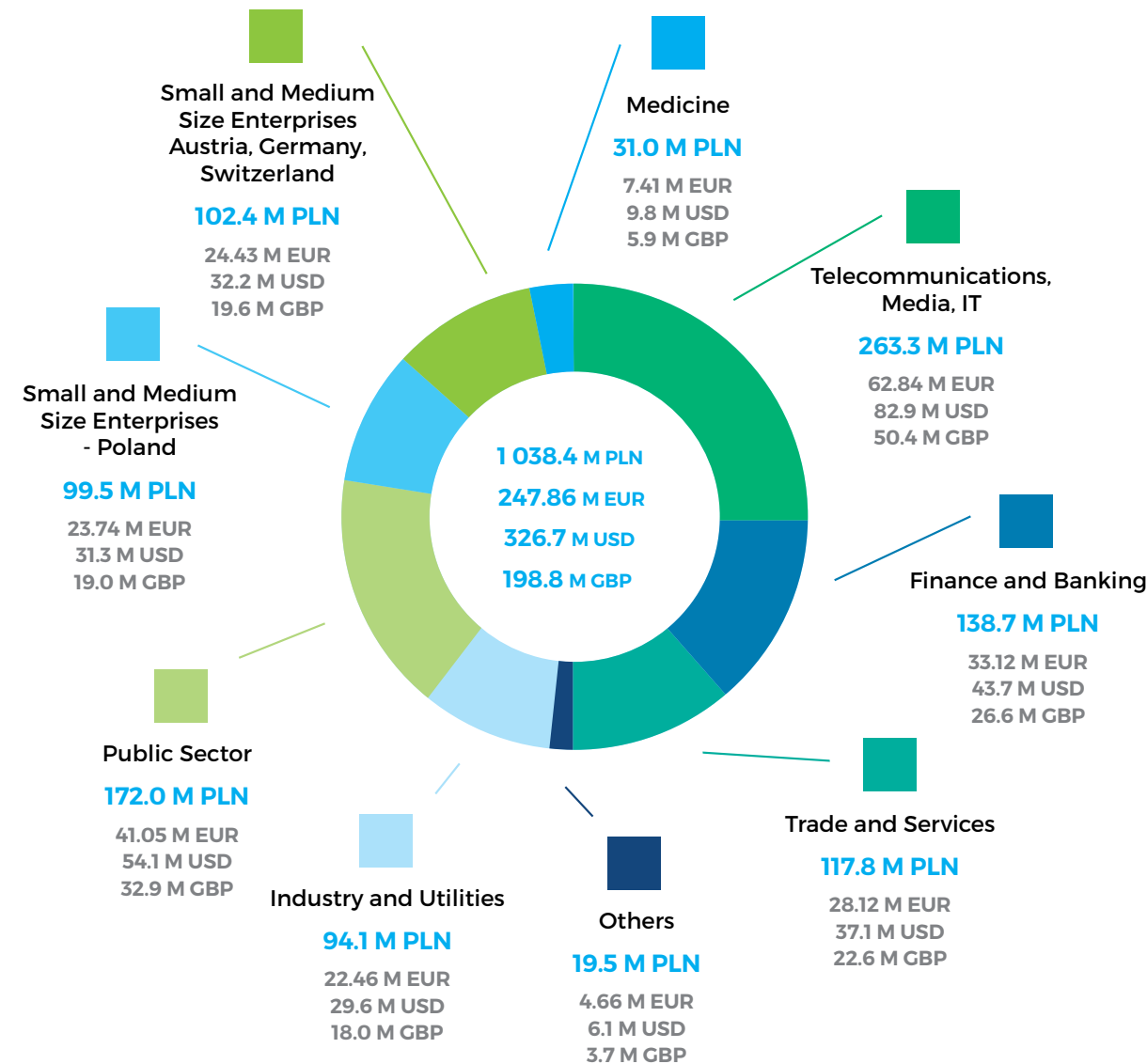
REVENUE GROWTH



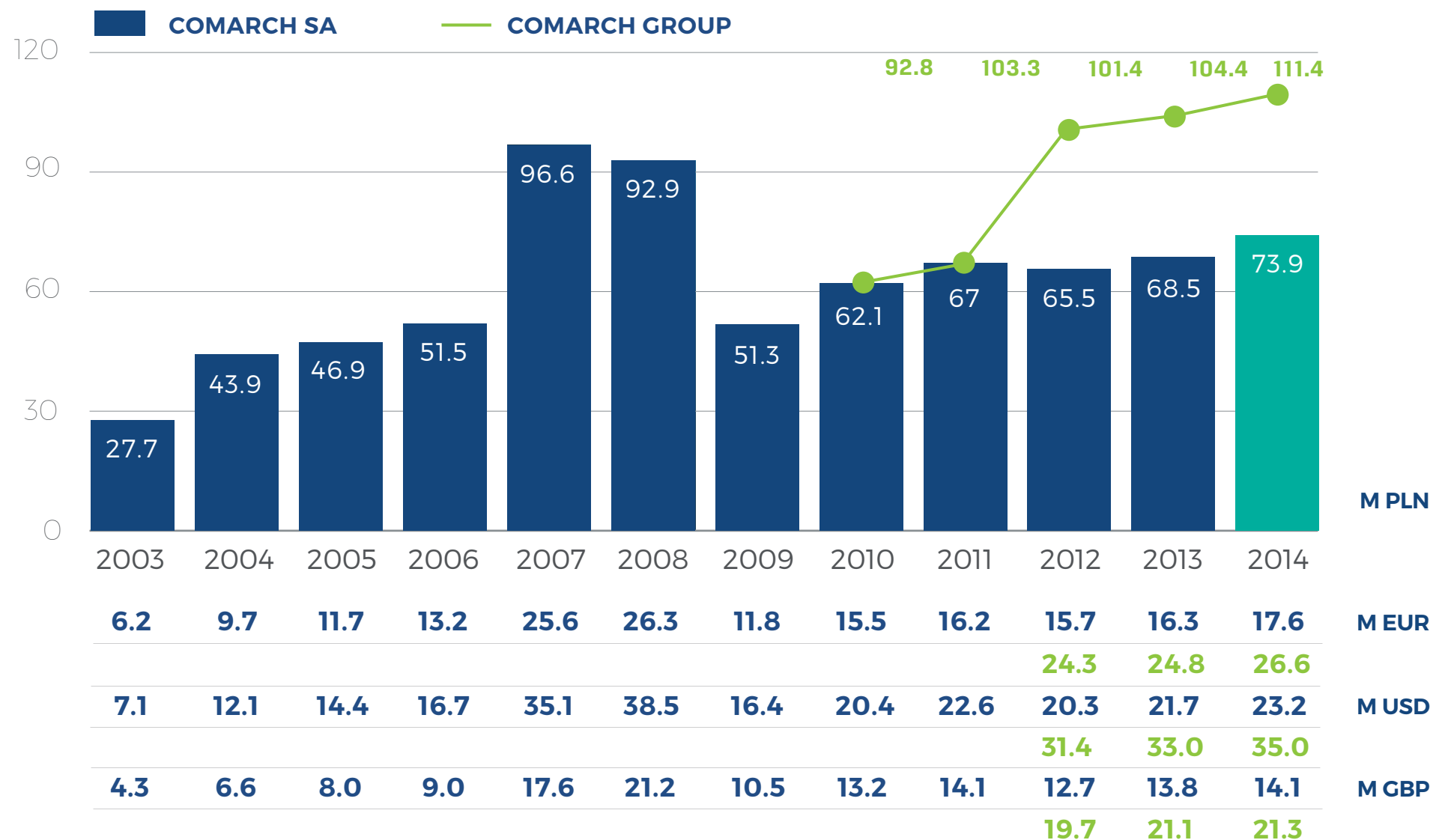
A HIGH & STABLE LEVEL OF EBITDA



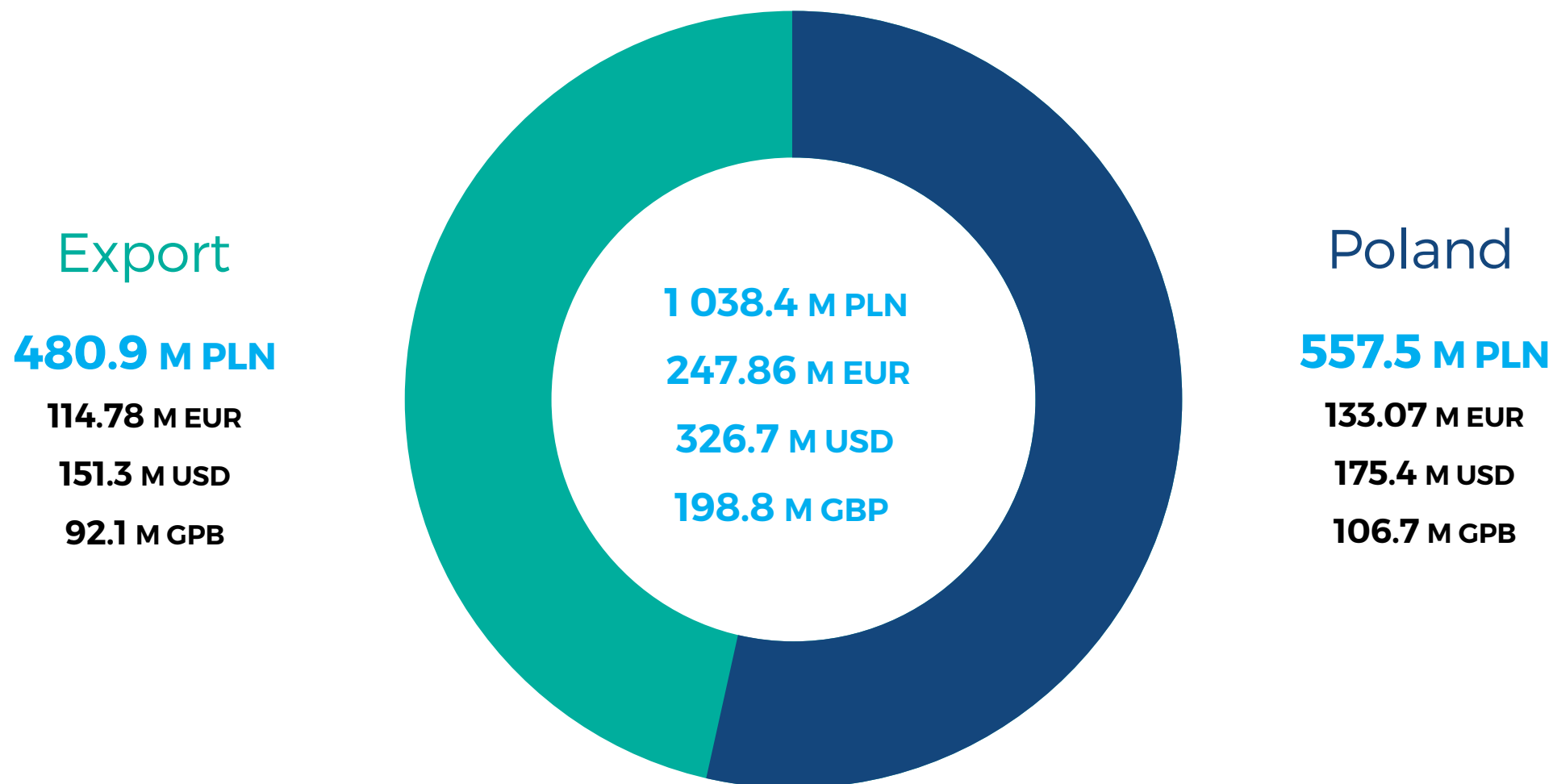
MARKET SALES STRUCTURE



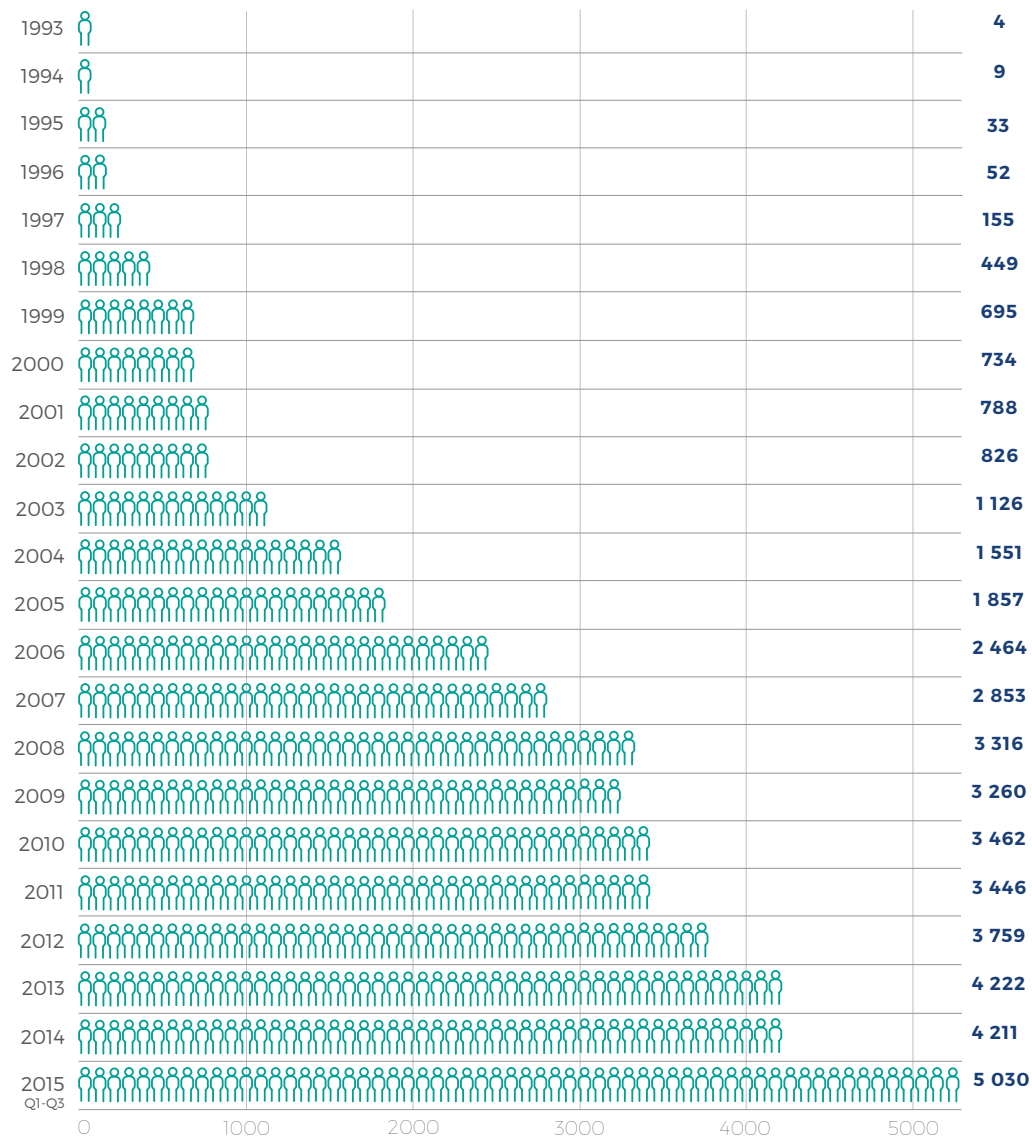
RESEARCH AND DEVELOPMENT EXPENDITURE



REVENUES FROM SALES GEOGRAPHICAL STRUCTURE



STABILIZATION OF EMPLOYMENT

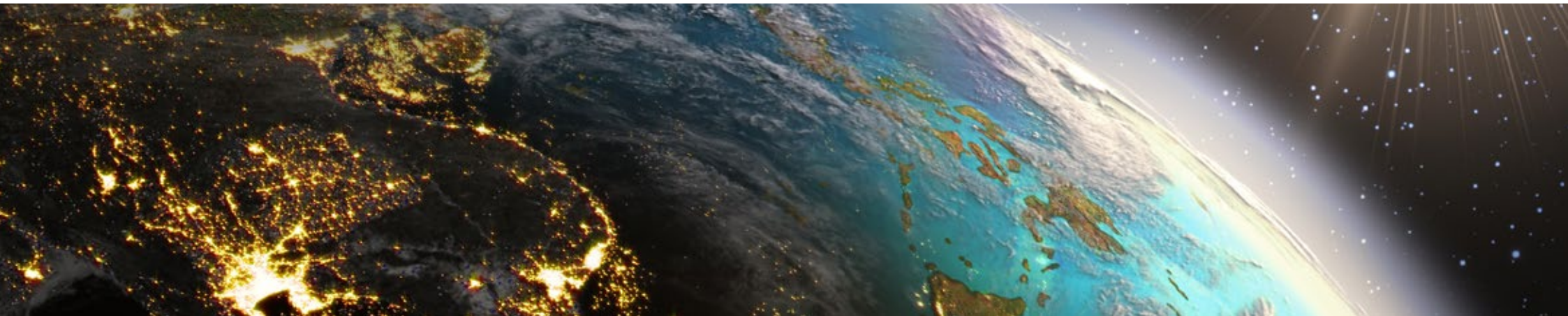


5030

first-class professionals (programmers, computer scientists and engineers), graduates from the best polish and foreign universities

PHILOSOPHY REGARDING COOPERATING WITH CUSTOMERS

- Implement projects within budgets and schedules.
- We understand your business needs and the technology that you use, we take these into consideration when creating solutions.
- We provide faster implementation and easier integration, thus reducing the risks of a project.
- We create easy, configurable solutions that will grow with business requirements.
- We offer the best value for money.
- We provide services to many business models from the traditional and wireless MVNOs.
- We specialize in ERP business management systems, information security, CRM systems and sales support, electronic communications, and business intelligence.
- We offer outsourcing services and consulting.



DIVERSIFIED PORTFOLIO OF PRODUCTS & CUSTOMERS

Telecommunications	Financial Services	FMCG	Retail	Travel	Oil & Gas
					
    	    	    	    	    	    

CHAPTER II

COMARCH IN EVERYDAY LIFE





8 MILLION

APPLICANTS HANDLED BY THE QUEUE MANAGEMENT SYSTEM OF THE SOCIAL INSURANCE COMPANY (ZUS)



475

REGISTERED TRIALS



125

FOREIGN AFFAIRS AGENCIES AROUND THE WORLD WITH THE DOCUMENT CIRCULATION SYSTEM



MORE THAN
600 000

OWN CRYPTOGRAPHIC CARDS SOLD ON THE POLISH MARKET



MORE THAN
12 000

OWN MICROSD CRYPTOGRAPHIC CARDS DELIVERED TO THE GENERAL POLICE HEADQUARTERS OF POLAND



6,6 MILLION

OBJECTS MANAGED WITHIN 1 PROJECT BY COMARCH FAULT MANAGEMENT



OVER
50

TELECOM COMPANIES WORLDWIDE ARE USING COMARCH BSS/OSS



OVER
300 MILLION

MOBILE SUBSCRIBERS IN EUROPE SERVED BY COMARCH BSS/OSS



500GB

(2,5 MILLION FILES) STATISTICS PROCESSED DAILY IN THE NG PERFORMANCE MANAGEMENT SYSTEM



ALMOST
2000 REPORTS

COUNTED DAILY BY NG PERFORMANCE MANAGEMENT, IN LESS THAN 1 MINUTE (ON AVERAGE)



50 000 000 000

CDR RECORDS PROCESSED BY COMARCH BSS IN 2014



OVER
5 MILLION
SWIFT MESSAGES PROCESSED ANNUALLY



OVER
2.5 MILLION
OPERATIONS ON SECURITIES ANNUALLY



OVER
15 THOUSAND
USERS OF COMARCH LOAN ORIGATION/
COMARCH BUSINESS PROCESS MANAGEMENT SYSTEMS



OVER
2.7 MILLION
BALANCES ON SECURITIES ACCOUNTS



OVER
20 THOUSAND
EMPLOYEES USING THE COMARCH CRM BRANCH OFFICE
SYSTEM EVERY DAY



OVER
200
BUSINESS PROCESSES DEFINED IN THE COMARCH
LOAN ORIGATION SYSTEM



OVER
16 YEARS
OF EXPERIENCE IN IMPLEMENTING CREDIT SYSTEMS



OVER
5 THOUSAND
BANK BRANCHES USING THE COMARCH CRM BRANCH
OFFICE SYSTEM EVERYDAY COMARCH



200 THOUSAND
INVESTMENT REPORTS GENERATED MONTHLY



OVER
50
ASSET AND WEALTH MANAGEMENT COMPANIES WORLDWIDE



215 MILLION

MEMBERS OF LOYALTY PROGRAMMES IMPLEMENTED
BY COMARCH



5.9 BILLION

PROCESSED LOYALTY TRANSACTIONS



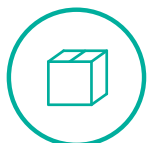
300 MILLION

DOCUMENTS PROCESSED BY COMARCH EDI SYSTEM IN 2014



2.1 BILLION

DOCUMENTS STORED IN THE IMPLEMENTED COMARCH ECM
SOLUTIONS



20 MILLION

GENERATED DELIVERY ORDERS IN THE COMARCH SFA
SYSTEM



13 DATA CENTERS

AROUND THE WORLD



MORE THAN

43 000

CLIENTS USE THE BACKUP IBARD24 SERVICE



MORE THAN

35 PERCENT

OF CLIENTS OF THE ERP DIVISION USE SOLUTIONS AVAILABLE IN
THE CLOUD



MORE THAN

300 ERP PROJECTS

IMPLEMENTED WITH THE USE OF EU FUNDS



120 THOUSAND

CLIENTS USE COMARCH CLOUD



MORE THAN

1000

ACCOUNTANCY OFFICES IN THE IKSIEGOWOSC24 SOCIETY



MORE THAN

7000

LICENSES FOR BI USERS IN THE ERP SYSTEMS

COMARCH

CONTACT US

Visit www.comarch.com for the contact information of our offices in the following countries:

Albania	Panama
Austria	Poland
Belgium	Russia
Brazil	Singapore
Canada	Spain
Chile	Sweden
Finland	Switzerland
France	Turkey
Germany	UK
Italy	Ukraine
Luxembourg	United Arab Emirates
Malaysia	USA

ABOUT COMARCH

Comarch Spółka Akcyjna with its registered seat in Kraków at Aleja Jana Pawła II 39A, entered in the National Court Register kept by the District Court for Kraków-Śródmieście in Kraków, the 11th Commercial Division of the National Court Register under no. KRS 000057567. The share capital amounts to 8,133,349.00 zł. The share capital was fully paid. NIP 677-00-65-406.

Copyright © Comarch 2016. All Rights Reserved

info@comarch.com | ir@comarch.com | www.comarch.com